

NEMESIS 9100

Universal Hardness Tester | Vickers, Knoop, Brinell, Rockwell

AUTOMATIC / FULLY AUTOMATED



NEMESIS 9100





Truly Universal...

The NEMESIS 9100 Series Universal Hardness testing systems provide exceptional performance and are designed with enhancements that deliver unparalleled accuracy and reliability, improved ergonomics and an overall enhanced and pleasant experience for the operator. The IMPRESSIONS® tester control and work flow software, forms an integral component of the testing system. Decreasing set up time and increasing testing efficiency through the use of programmable test patterns and specific designed software applications, developed upon the request of demanding users.

NEMESIS 9100 hardness testing instruments are routinely used for testing metals and plastics, in the aerospace and automotive industry, laboratories for sample evaluation, or to conduct common but versatile testing tasks.

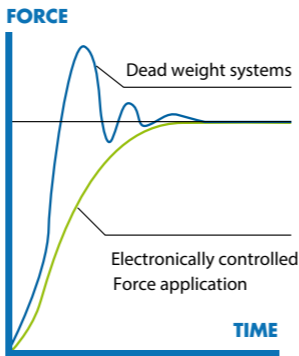


HARDNESS SCALES

- 
VICKERS 100gf - 150kgf
also HVD (HVT)
- 
KNOOP 100gf - 5kgf
- 
BRINELL 1kgf - 3000kgf
also HBD (HBT)
- 
ROCKWELL 3kgf - 150kgf

* For more details on the scales see page 28

TECHNOLOGY OF TODAY



Load cell, closed loop, force feedback system

A FORCE RANGE, THAT HASN'T BEEN DONE BEFORE!

1gf	100gf	250kgf	NEMESIS 9101	3000kgf
1gf	200gf		NEMESIS 9103	3000kgf

HIGHLIGHTS

- 1 Multi Load Cell, Closed Loop force application system, error <0,25%
- 2 Descending test head, with fixed work piece position
- 3 8-position turret with standard built-in laser positioning system
- 4 3 indenter positions, 3 LWD objectives installed (included)
- 5 18 Mega pixels, 4K+, full color, integrated camera system
- 6 Quick change anvil post
- 7 CNC motorized XY-stages, variable stage dimensions and travel ways
- 8 Full XY-stage overview camera, optical zoom system, with variable field of view
- 9 TTL power LED, Dual source power LED bank, stage illumination
- 10 Z-axis with ball bearing spindle
- 11 Integrated high performance system controller, i7 processor, 120GB mSSD storage
- 12 Industrial 15" touch screen, option for second screen 15" to 55" or projector
- 13 Top-class replaceable body parts, shock proof ABS covers

Crossing all boundaries...

1 8 POSITION PRECISION TURRET & LASER POSITIONING

The 8 position turret is supplied as a standard feature on all 9100 models and allows to install indenters for Rockwell, Vickers, Knoop and Brinell (balls 1mm, 2.5mm, 5mm & 10mm) testing. Factory installed, the NEMESIS 9100 has 3 standard objectives 0.7x, 5x, 10x and a built-in Laser Positioning system.

2 STAGE OVERVIEW CAMERA (OPTIONAL)

Create magnified sample overview with the optional integrated auto focus optical & digital zoom, overview camera. The field of view of this sophisticated full color camera system does not limit you to one field of view, but gives a ZOOM range of 50 x 35 mm up to 200 x 180 mm without the need to use time-consuming scan and stitch functions.

Once the viewing area needs to be larger than the zoom range, scanning and stitching can be selected to create full stage overview. Click and go is one of the standard testing features of the overview camera. Just click randomly on designated area's and push "start". All tests run automatically. The pattern video overlay function eases positioning of multiple test rows or patterns across the specimen. The pattern video overlay scales automatically with every magnification, stepless, while the zoom camera decreases or enlarges the overview.

3 DYNAMIC Z-AXIS CONTROL & COLLISION DETECTION

A high end ball bearing Z-axis spindle is one of the very unique functions. Z-axis displacement at an accuracy of micron's supports ultra-fast auto focus. Z-axis controls are nearly limitless; CNC as a result from a test program, by touch screen indicators, from the built in joy stick, by the scroll wheel of the mouse, by fast up and down buttons or from a scroll wheel on the front of the machine. Positioning has never been this easy. Speed control related to your own movement; (0.01 up to 20 mm/s). To avoid any collision between the work piece and the turret, the Z-axis is controlled by a flawless collision detection and Z-axis retraction system. So neither the tester nor the workpiece are exposed to any damage.

4 HIGH SPEED CNC MOTORIZED XY-STAGE (OPTIONAL)

Save time and improve efficiency with one of the high speed, highly accurate motorized XY-stages. Available in variable sizes from standard, to large and extra-large. Enable automated sequencing of multiple samples. The ultra-high accuracy and repeatability guarantee precise positioning of indents and allow re-evaluation of any measurement points in batch or single view. Repeatability within 3 micron.



CONNECTIVITY, CONTROL & QUALITY ASSURANCE

The system has bi-directional in and output channels. Tester control can be conducted remotely and supports for instance, but not limited to robotic systems. Test values can be exported as single values or as string of data to be handled by 3rd party quality evaluation software.

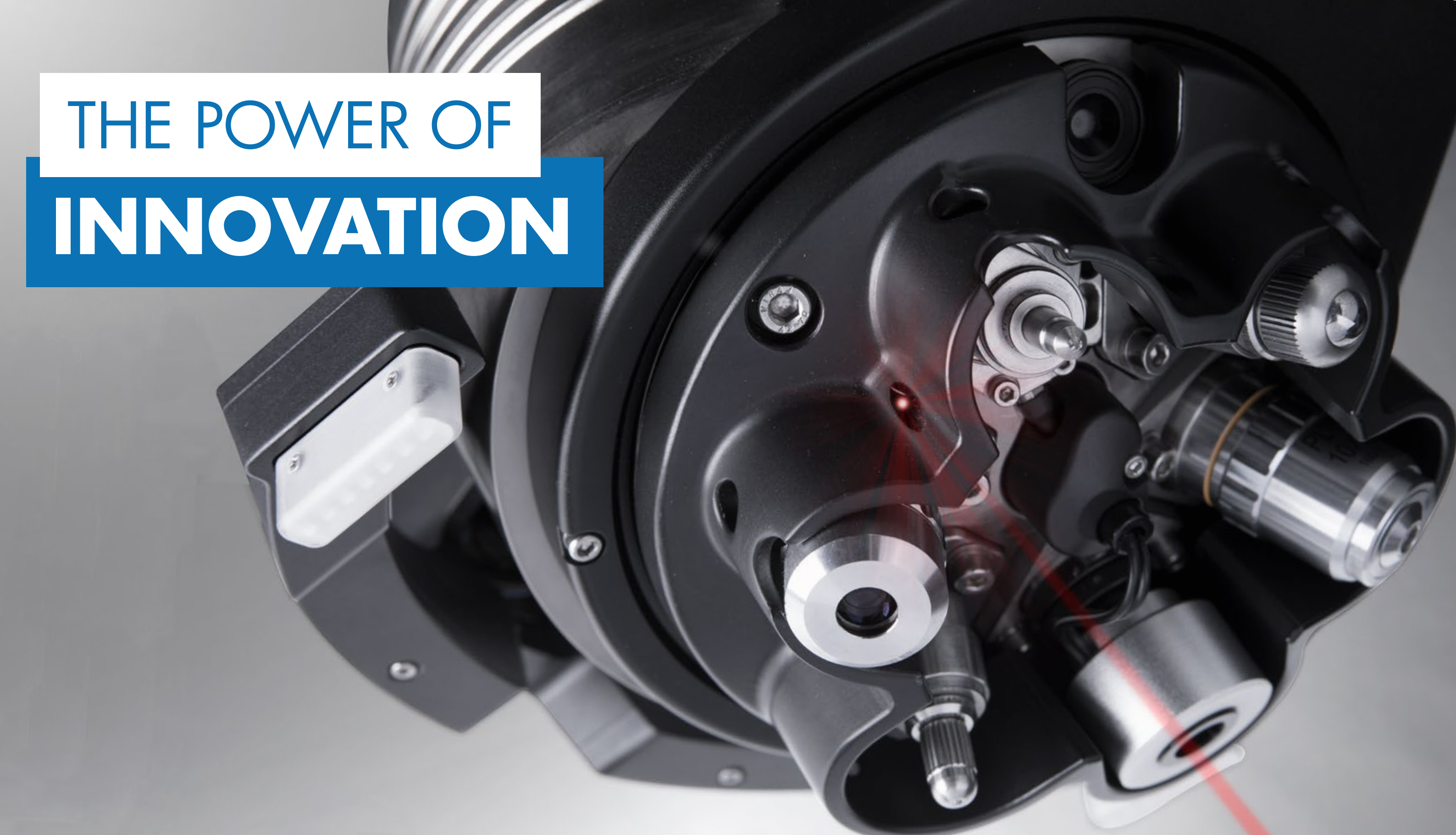
Q-DAS certified. (Optional)

5 15" HD TOUCH SCREEN OPERATOR INTERFACE

All machine control and workflow process can easily be operated from the 15" industrial capacitive touch screen. At choice a second 15" or larger screen can be connected.

6 SHOCK RESISTANT ABS MACHINE COVERS

The tester is fitted with a high-end external shell structure. All in a unique design with high-end aluminium panels. The shock proof and damage resistant ABS machine covers can withstand the harshest environment.



THE POWER OF INNOVATION

It's not about idea's, it's about making ideas happen...

Sophisticated and unique, 100% linear, vertical force actuator. Cutting edge technology, high speed turret with integrated multi load cell signal handling, stage overview camera at indenter position, power LED TTL illumination, positioning laser and an advanced collision detection and test head retraction system.

TURRET TECHNOLOGY

The high speed 8 position turret or revolver is the main center of performance of the NEMESIS 9100 series.

Designed for test forces up to 3000kgf in the NEMESIS 9100 configuration, this masterpiece of mechanics and optics also incorporates load cells and electronics to handle all force application and force system feedback.

It's also the home base of the high definition overview camera equipped with optical zoom system and autofocus, at indenter position. The technology of this camera provides a variable field of view of the overview, not seen in the industry before. Time consuming image stitching is therefore not required for most common samples.



1 POWER LED BANKS

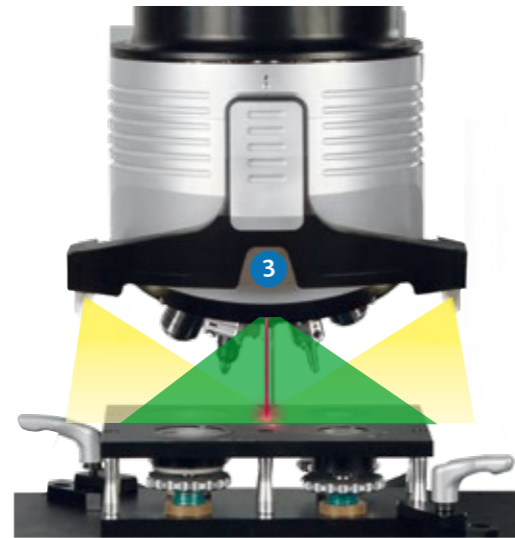
On the side of the turret, two power LED banks, mounted at a distance, provide cross surface illumination, assuring that the overview system has excellent viewing performance under all circumstances and on all materials.

2 3 OBJECTIVES

The three long working distance objectives mounted on the turret as a standard accessory, channel images to the built in 18 megapixels, full color, 4k+ camera system. The result is a bright, sparkling image of your indent, the start of a successful precise automatic measurement function.

3 LASER POSITIONING SYSTEM

Another feature, not seen before in this class of instruments, is the standard, Class 3 laser positioning system. Position parts with great precision at the exact indent position. Provides operator comfort without limitations.



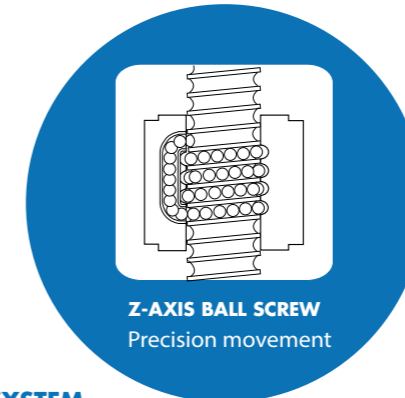
4 PROTECTION SYSTEM

Protecting the turret, load cells, optics and other parts, but also the workpiece against collisions caused by operator failure or program failure, the turret has a highly sensitive collision detection and retraction system. Broken indenters or damaged optics are simply history.

The system also recognizes unintended resistance that could be caused from hands or fingers and will retract the test head in any suspect situation instantly.

The turret also has a ridged protection parts for possible hits caused by positioning of the to be tested. The skirt mounted on the rotating center of the turret protects each individual turret position against accidental damage.

Vertical force actuator with position reading system



MULTI LOAD CELL SYSTEM

To cover the wide range of test forces the low force models have three load cells installed. Each with its specific force range. Only in this way, high force accuracy and repeatability are always guaranteed.

POSITION READING SYSTEM

The force actuator with a stroke of 320 mm has a linear reading system (glass scale) manufactured by HEIDENHAIN Germany. This top quality system with ABS position reading, provides a constant loop of information on the position of the test head and communicates details of the position that are used for rapid autofocus. This system enables you to conduct comprehensive depth measurement methods such as HVD (HVT) and HBD (HBT) normally not available on Micro Vickers / Vickers hardness testing machines.

SERVO DRIVE SYSTEM

The actuator is driven by a high quality servo drive system. The system provides constant feedback on load, speed, resistance and other parameters that influence the operating process and tester integrity. At a central position in the force actuator, a ball bearing spindle translates the servo rotation to the operator desired direction or test cycle. Tester control and performance at the highest level.

The advantage of the descending test head over traditional spindle machines is the ease of handling larger parts and the fixed height of the workpiece position. Traditional spindle machines usually have a trapezoid spindle, that offers little accuracy on position, a wobbly image and a slower autofocus function.

Servo Drive System for low force models



3-AXIS joystick with fine adjustment

Stage & anvil docking station

Science fiction?...

No, just reality ahead of schedule

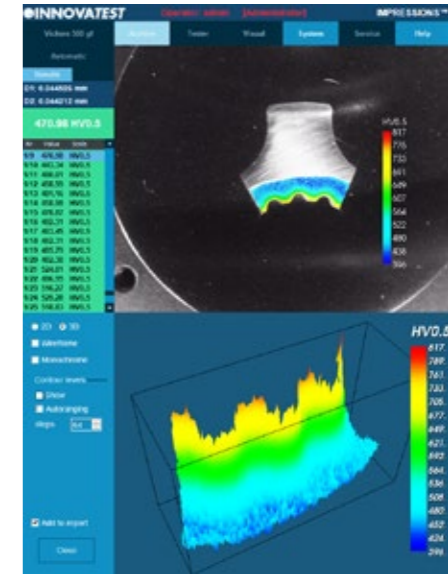
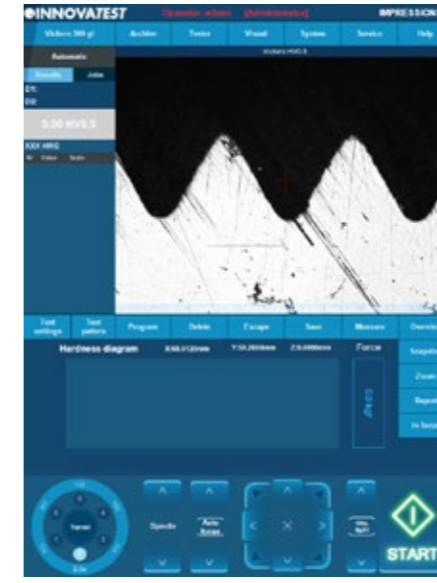
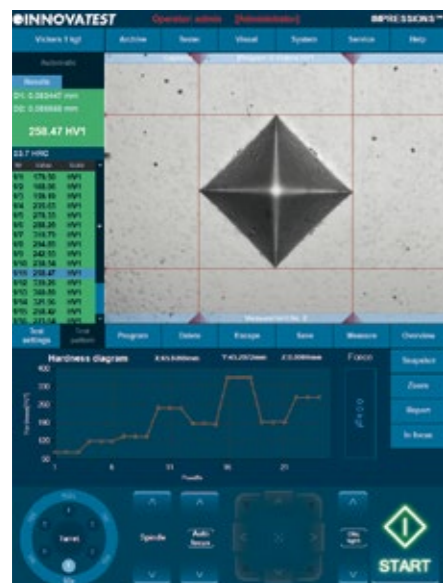
The Graphical User interface (GUI), contains industry preferred applications, and offers easy to learn, advanced workflow control. A simple test can be set up and conducted in about 3 seconds... IMPRESSIONS layout & functions will match not only your particular application requirements, but also meet the needs and preferences of your operators. A user level management system maximizes their comfort and efficiency.

The unique in the industry, 15" portrait mode, capacitive touch screen, gives room to all possible applications. Dual screen: For demanding users, a second vertical 15" or 24" landscape screen can be connected. For educational purposes, schools, universities, a full HD projector can be connected to the HDMI supported outlet. With this many options in Hardware and Software configuration, yearly updates and on demand upgrades, IMPRESSIONS® is truly the leading software in the industry.



FEATURED BY IMPRESSIONS v2

ADVANCED SOFTWARE APPLICATIONS



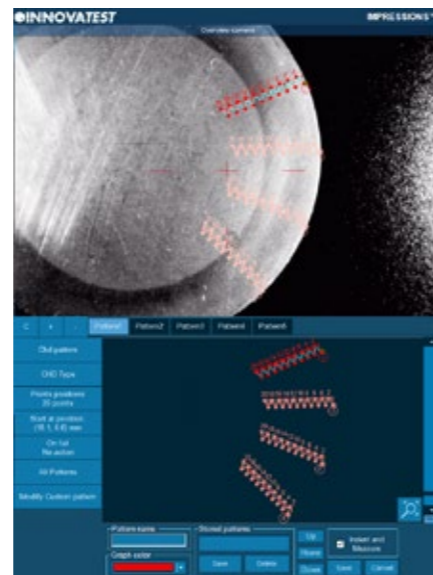


1 VIDEO OVERLAY GRAPHIC PATTERN EDITOR

The IMPRESSIONS® pattern editor allows the user to create any number of test patterns with a large number of variable settings. Create test patterns with great precision and freedom. Verify the settings in the preview mode. Drag & drop patterns from one test sample to another sample. Live vision technique over zoom overview camera, no image stitching required. Combine different patterns and even different test forces in one program, and run them fully automatically. All test points can be identified individually or to customer specifications. The label is shown in the test result list and in the test results overview and print out. An important function for later sample analyses.

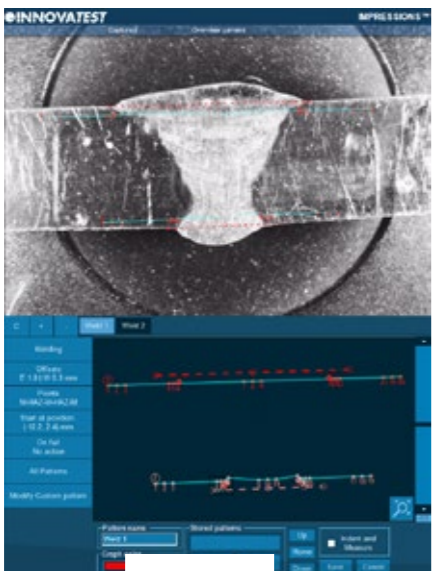
2 CHD, SHD, NHD

For the performance of test series for CHD/SHD/NHD data of specimens according to standard. The test can be started directly from the surface view or from the overview. Additional core points of hardness can be defined separately for NHD measurements. The distances of test points are automatically set to a minimum distance, following the standard, to assure correct testing is conducted. Time saving test mode "complete all indentations – then evaluate" and "auto-stop" to complete test series as soon as the lower hardness limit has been reached.



3 WELD INSPECTION (ISO 9015)

This especially developed tool enables you to conduct hardness testing on welded parts or segments according to ISO standard. Setting up the pattern according to the requirements becomes "easy-to-do", due to pre-set test points in the different zones of the weld and automatic correlation between test points. The system will run a fully automatic test procedure and display and record the results accordingly.



Easy to operate, time reducing solutions...

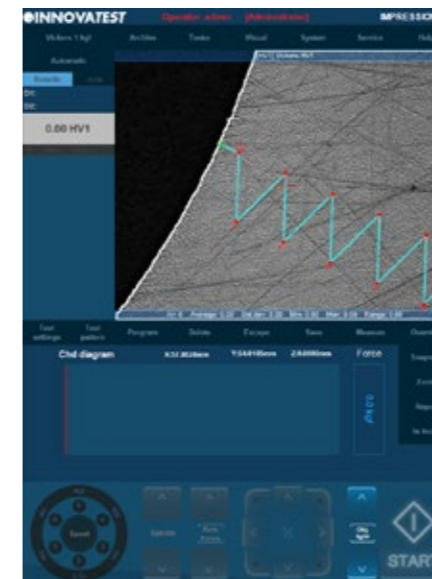
4 HARDNESS OF SCREW THREAD DECARBONIZED ZONE (ISO-898-1)

A specialized software tool of IMPRESSIONS® allows you to set up and conduct fully automatic testing as per ISO 898-1 for screw thread measurement of (de)-carbonized part.



5 AUTOMATIC EDGE DETECTION

Technology that automatically or at a mouse click recognizes the edge of your sample. This helps to determine and fix the desired starting position for CHD or other pattern testing jobs.



6 AUTOMATIC CONTOUR SCANNING

This application scans the entire outline (or partial) area of a sample. The function can be used with an objective or, ultra fast, by using the overview zoom camera. The system scans the entire outline defined and stores all relevant data in the test program. Subsequently, a chosen number of test points can be programmed into the particular program, or be conducted at selected distances, relative to the edge. This advanced feature enables the hardness testing procedure to be performed completely automatic. An excellent feature to combine with 2D or 3D hardness mapping, also known as "plane hardness chart".

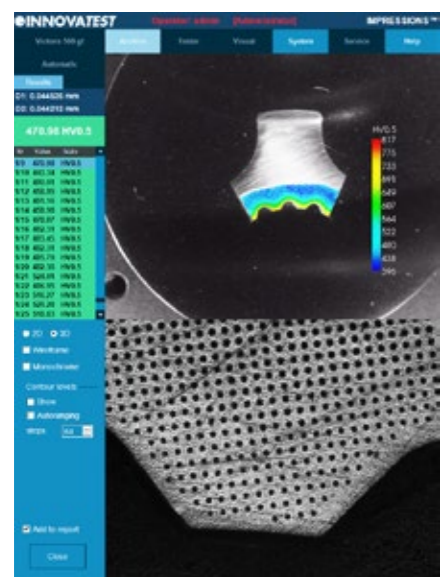


Yes, we can...



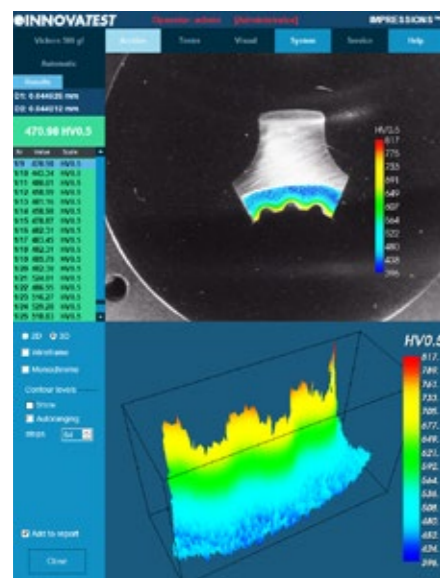
7 Kic CRACK MEASUREMENT

For those requiring more in depth knowledge on materials behavior, and wish to study on fracture and fatigue, crack growth can be predicted (and measured) by using the Kic application. The software supports Kic crack detection under load. At choice, one of both methods, Palmqvist or Median / Radial fracture toughness can be selected.



8 2D HARDNESS CHART

The optional application „Plane hardness chart“, also referred to as Color Mapping is the perfect tool for securing the detail of the hardness distribution over the total cross section, especially of heat treated samples. An important feature in material exploration, weld testing or in damage analysis.



9 3D HARDNESS CHART

Besides the option to display a 2D graphic diagram, the system can generate a 3D visual. 2D and 3D hardness chart are one application.

10 SNAPSHOT FUNCTION

This handy function in IMPRESSIONS® allows you to make screen captures of the viewing area. It gives the opportunity to store such images with comments or to paste them into the report generator for further processing.



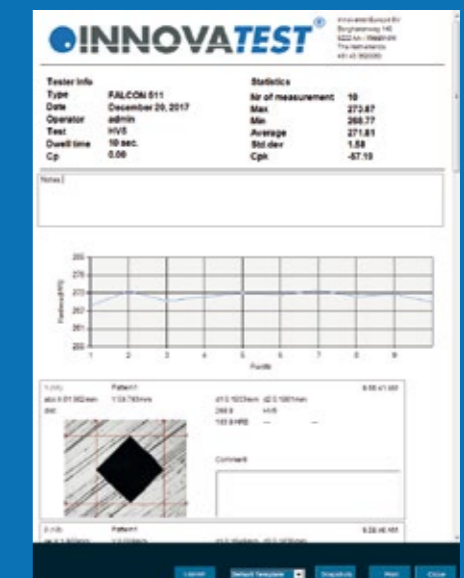
11 USER DEFINED PROGRAMS

For repeating jobs, IMPRESSIONS® utilizes the option of setting up and storing custom test programs. For each task, a “job” can be created. All application specific parameters, like hardness scale, force, dwell-time, pattern, conversion and the report template are stored in the same program.



12 REPORT GENERATOR

The report generator offers to design customized testing reports, including your company's details and logo and include testing results, graphics and pictures of indentations in an easy to edit environment. The file can be printed straight to a connected laser printer for further distribution. Alternatively the file can be exported as a CSV file, to be used in MS Office applications or 3rd party quality assurance software.



AUTOMATIC IMAGE EVALUATION



1

1 AUTO FOCUS

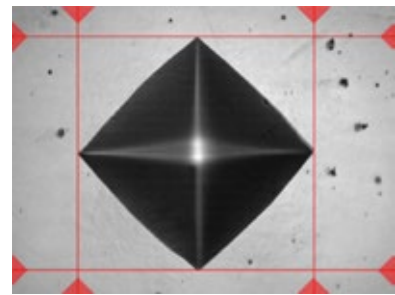
Fast & precise, observe how IMPRESSIONS® finds focus from a large distance, as far as the travel of the Z-axis allows. Algorithms used for close distance autofocusing set new standards in AF speed.



2

2 AUTOMATIC MEASUREMENT

Manual positioning of filar lines is no longer required. IMPRESSIONS® refined measurement algorithms detect indents even on very poor or scratched surfaces and measure the relevant indent dimensions according to standards. Stay in control by switching to manual measure mode and have the option of adjusting measurements by touching the screen or using the mouse. Filar lines can be colored to give the best contrast against the specimen's surface. To assure that measurements meet relevant standards on symmetry, enable the automatic indent check. All hardness values can be converted to other scales according to ISO 18265, ISO 50150, ASTM E140.

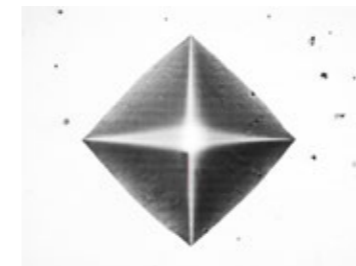


One accurate measurement is worth more, than 1000 expert opinions...

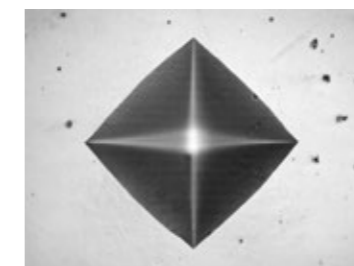
3 ILLUMINATION SETTINGS

IMPRESSIONS® software automatic illumination system adapts to the correct illumination regardless of the sample surface quality, wherever on the sample, independent from material (steel, carbide, coated or ceramic). Contrast, Brightness and program, can be set automatically for each measurement or controlled manually. Sharpness can be stored with the pre-determined test

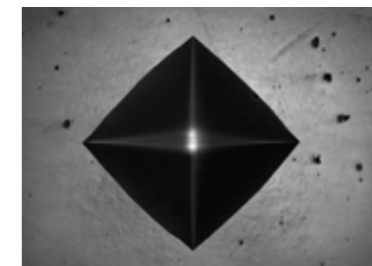
Too bright



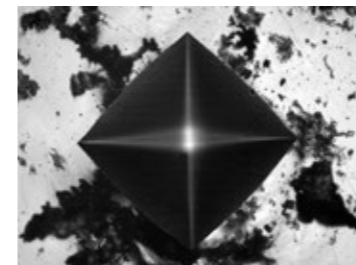
OK



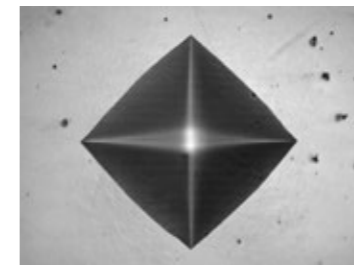
Too dark



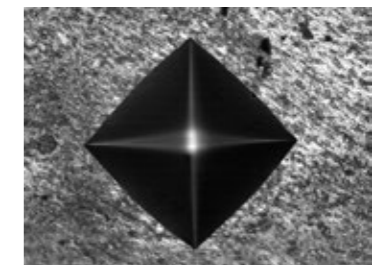
3



Irregular surface



Regular surface



Poor surface

4

4 REFINED IMAGE DETECTION

Complex, refined algorithms ensure reproducible measurements on different materials and even on scratched and damaged surfaces.



INCOMPREHENSIBLE POSSIBILITIES

The NEMESIS 9100 is specifically designed to use the large selection of fixtures and specimen holders they can be used on any of the stages and anvils. The frame size allows a large workspace accomodation. Regardless of the shape of a particular workpiece, the accessories list and corresponding software applications enable to test almost any component and part.

INNOVATEST
 MANUFACTURING SOFTWARE
 Designing the way
 4022 AA MARKET ST. BLDG.
 PHOENIX AZ 85008
 info@innovatest-europe.com

Tester Info:
 Type NEMESIS 9100
 Date 24-1-2018
 Operator Admin
 Dwelltime 10 sec.
 Test HVIS
 Program 5 4bus Op6/7 12.7x99 courbes FN14 Range

Statistics:
 Nr of measurement 40
 Max 166.78
 Min 110.85
 Average 133.12
 Standard Deviation 13.01
 Range 45.93

Gamma 19097-104
four 4

Notes:

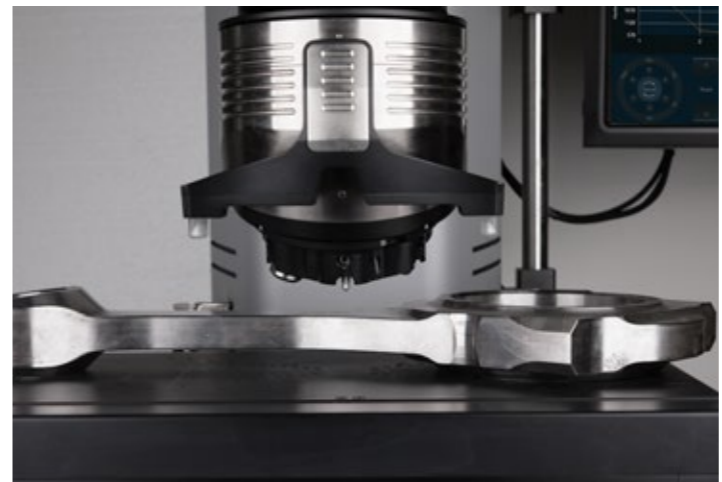
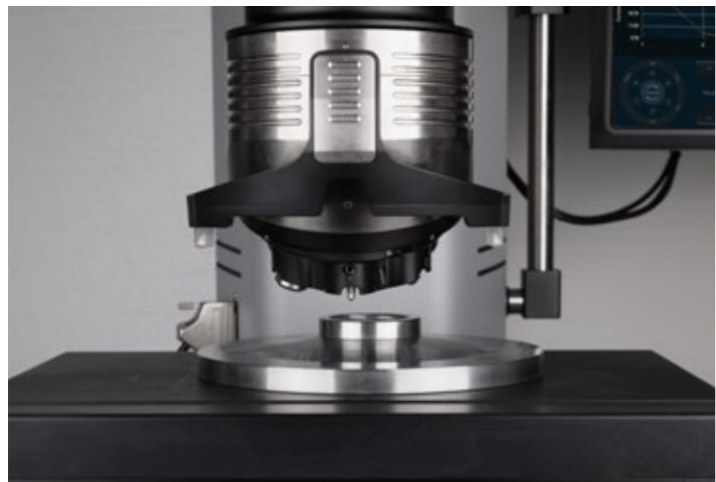
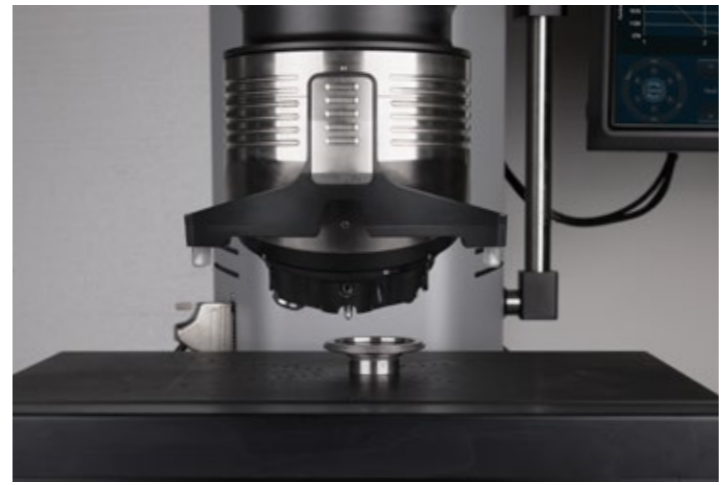
HARDNESS DIAGRAM

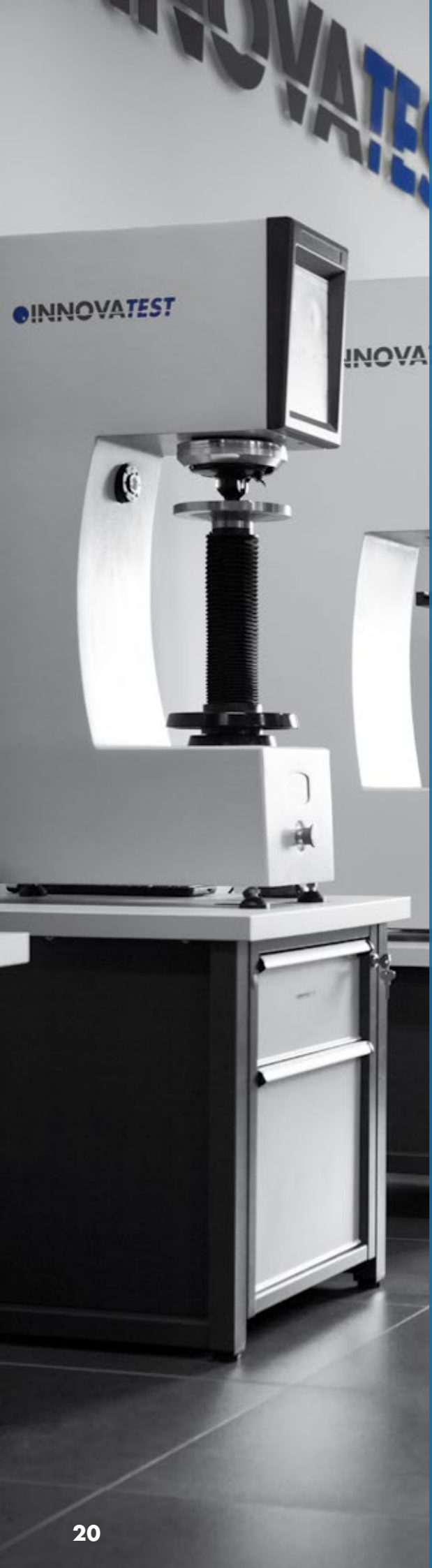
Min	Max	1	2	3	4	5	Impression			
128	123	106	187	102.0	1	136.21	133.33	143.34	127.62	141.19
103	101	120	122	117.0	2	112.24	116.71	118.77	118.84	130.88
109	98	120	122	20.0	3	116.4	118.72	131.01	128.24	126.10
102	100	120	122	20.0	4	117.37	130.87	131.37	122.66	116.71
105	103	136	137	30.0	5	130.98	130.21	131.85	131.06	134.85
116	113	148	147	40.0	6	136.88	138.08	140.97	143.92	138.11
128	123	160	162	60.0	7	148.98	148.08	136.6	147.17	148.28

Buttons: Layout, Default Translator, Trajectory, Print, Close

AMMUNITION TESTING PATTERN CONFIGURATOR & REPORTING

This application is developed in close cooperation with special manufacturers of ammunition shells and casings. It allows single and multiple shell/casing testing according to the requirements in the industry. The fully automatic test procedure generates a detailed report, providing single readings and statistics with Go/No indication. This further includes sophisticated settings for re-measurement. For particular details please contact our sales department.





SUPPORT YOUR BEST TESTING RESULTS

With our rigid designed Bench stands

- Rock solid bench stands
- 100% retractable drawer, bearing guidance, max 100kg load. Rubber anti slip bottom
- Lockable cabinet, 300mm high
- Adjustable feet, (+/- 50mm height adjustable to reach ergonomic working position)
- Made of corrosion resistant zinc plated steel with RAL powder coating
- Carrying capacity of 400kg
- Top surface made of 50mm Plywood with 1.5mm chemical resistant plastic plating, edges made of shock resistant 3mm ABS side liner
- Industrial quality, for workshop or laboratory

Designed for hardness testing instruments, painted in INNOVATEST® RAL colors that matching our testers.



UN-STAND/960 71 x 75 x 80 cm

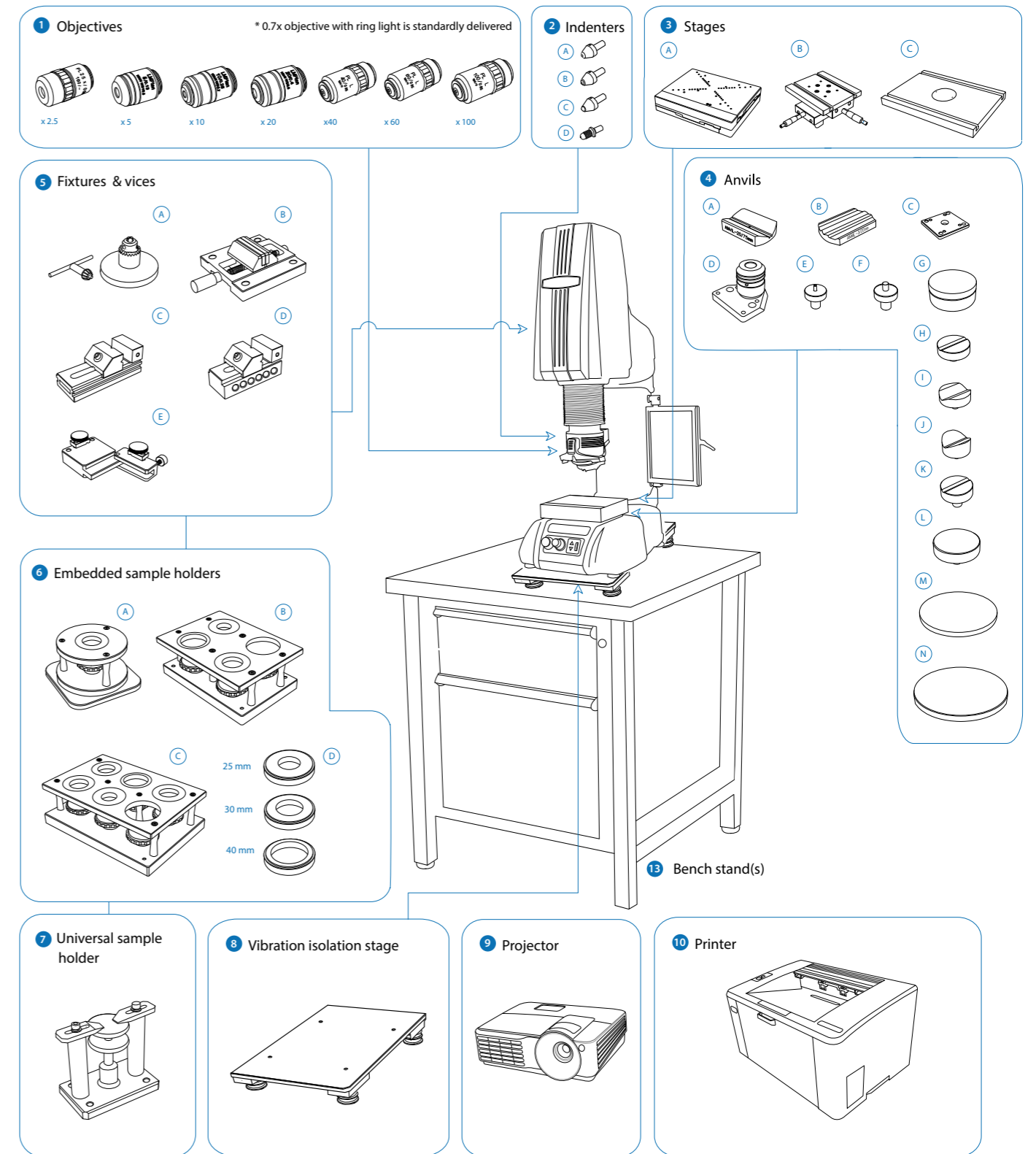


UN-STAND/965 150 x 75 x 80 cm

ACCESSORIES

NEMESIS 9100

Schematic overview of the configuration options, standard and optional accessories



Not all accessories are displayed on this page. Full details can be found on the Order details page.

ORDER DETAILS

NEMESIS 9100



NEMESIS 9101 Universal Hardness Tester, 100gf - 250kgf	NEMESIS 9101	
NEMESIS 9103 Universal Hardness Tester, 200gf - 3000kgf	NEMESIS 9103	

ACCESSORIES

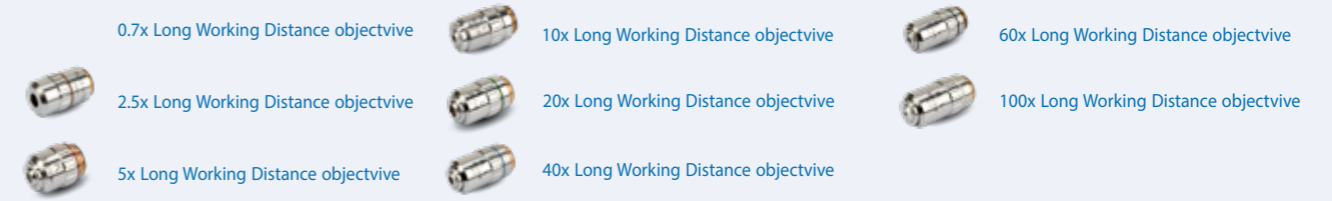
1	Objectives			
	0.7x Long Working Distance objective	AS900-0.7OBJ		STANDARD
	2.5x Long Working Distance objective	ASSUN-OBJ2.5X		
	5x Long Working Distance objective	ASSUN-OBJ5X		STANDARD
	10x Long Working Distance objective	ASSUN-OBJ10X		
	20x Long Working Distance objective	ASSUN-OBJ20X		STANDARD
	40x Long Working Distance objective	ASSUN-OBJ40X		
	60x Long Working Distance objective	ASSUN-OBJ60X		
	100x Long Working Distance objective	ASSUN-OBJ100X		
	Overview / Full view zoom camera + software functionality, field of view 50x35mm up to 200x180mm, including dual power LED bank	UN-OVCAM2D		
	Indenter actuator post (2nd & 3th indenter position) factory installed	FALCON/IP2/IP3		STANDARD
	High speed 8 position turret (revolver head), for 3 indenters, 3 objectives, Laser positioning guide	UN-8POSTUR		STANDARD
2	Indenters			
	Rockwell C Diamond Indenter ISO/ASTM certified	IN/6005		
	Rockwell Ball Indenter 1/16", includes 1 carbide ball, ISO/ASM certified	IN/7506		
	Rockwell Ball Indenter 1/8", includes 1 carbide ball, ISO/ASM certified	IN/7606		
	Rockwell Ball Indenter 1/4", includes 1 carbide ball, ISO/ASM certified	IN/7706		
	Rockwell Ball Indenter 1/2", includes 1 carbide ball, ISO/ASM certified	IN/7806		
	Carbide balls 1/16", ISO/ASTM certified	IN/2507		
	Carbide balls 1/8", ISO/ASTM certified	IN/2509		
	Carbide balls 1/4", ISO/ASTM certified	IN/2514		
	Carbide balls 1/2", ISO/ASTM certified	IN/2519		
	A Vickers Indenter ISO/ASTM certified	IN/8105		
	B Knoop Indenter ISO/ASTM certified	IN/8205		
	C Brinell Indenter 1 mm, includes 1 carbide ball, ISO/ASTM certified (3mm shaft)	IN/7001		
	Brinell Indenter 1 mm, includes 1 carbide ball, ISO/ASTM certified (6.35mm shaft)	IN/7000		
	Brinell Indenter 2.5 mm, includes 1 carbide ball, ISO/ASTM certified	IN/7005		
	Brinell Indenter 5 mm, includes 1 carbide ball, ISO/ASTM certified	IN/7010		
	Brinell Indenter 10mm, includes 1 carbide ball, ISO/ASTM certified	IN/7015		
	Carbide balls 1mm ISO/ASTM certified	IN/2005		
	Carbide balls 2.5 mm ISO/ASTM certified	IN/2010		
	Carbide balls 5mm ISO/ASTM certified	IN/2015		
	Carbide balls 10mm ISO/ASTM certified	IN/2020		

3	Stages	A	Motorized CNC XY-stage, 337x187mm Displacement: 200x100mm, 450kgf Motorized CNC XY-stage, 437x238mm, Displacement: 300x150mm, 450kgf Motorized CNC XY-stage, 630x238mm, Displacement: 400x150mm, 450kgf Repeatability +/-0.003mm requires: cable set CE-99-0003 1x and AS5000-200-15 Clamping mounting plate 1x	UN-XY572010 UN-XY903015 UN-XY904015	
			Motorized CNC XY-stage, 410x280mm Displacement: 200x100mm, 4000kgf Motorized CNC XY-stage, 510x280mm, Displacement: 300x150mm, 4000kgf Motorized CNC XY-stage, 610x280mm, Displacement: 400x150mm, 4000kgf Repeatability +/-0.005mm requires: cable set CE-99-0003 1x and AS5000-200-15 Clamping mounting plate 1x	UN-XY932015 UN-XY933015 UN-XY934015	
		B	Manual XY-stage with analogue metric micrometers 180x160mm Displacement: 25x25mm scale 0.01mm Max. Load 300KG Requires: UN-XYZ BUSH50 1X & UN-XYZ30FP50-55 1X	UN-TESTTABLE/030	
			Cable connecting to CNC stage to embedded driver (XY- set)	CE-99-0002	
		C	Large flat surface testing table, with 2 T-slots, 350x250mm, for large components, requires AS5000-450 1x and AS9000-21-01 Locking ring 1x	UN-TESTTABLE/015	
			Large flat surface testing table, with 2 T-slots, 450x350mm, for large components, requires AS5000-450 1x and AS9000-21-01 Locking ring 1x	UN-TESTTABLE/016	
			Large flat surface testing table, with 2 T-slots, 600x300mm, thickness 25mm, for large light components, requires AS5000-450 1x and AS9000-21-01 Locking ring 1x	UN-TESTTABLE/019	
			Clamping mounting plate	AS5000-200-15	
			Locking ring	AS9000-21-01	
4	Anvils	A	Small V-Anvil 3-20mm requires base plate	UN-ANVILSV/105	
		B	Large V-Anvil 20-75mm requires base plate	UN-ANVILLV/106	
		C	Base plate for V-anvils un-anvilsv/105 & 106	UN-VANVILBASEPL	
		D	Quick change anvil base (required for mounting testing tables, except round	AS5000-450	
		E	Spot anvil 5mm, requires AS5000-450	UN-ANVIL/010	
		F	Spot anvil 10mm, requires AS5000-450	UN-ANVIL/011	
		G	Irregular part table support, ø150mm, requires AS5000-450	UN-ANVIL/020	
		H	V-Anvil 80mm, 3,3-20mm, requires AS5000-450	UN-ANVIL/040	
		I	V-Anvil 80mm, 12-80mm, requires AS5000-450	UN-ANVIL/045	
		J	V-Anvil 80mm, 20-140mm, requires AS5000-450	UN-ANVIL/050	
		K	"V"Testing cradle, max. test force 62.5kgf	UN-CRADLE/105	
			Flat anvil 80mm, requires AS5000-450	UN-TESTTABLE/002	
			Testing table flat 200mm, screwfix, requires AS5000-450	UN-TESTTABLE/010	
			Testing table flat 235mm, screwfix, requires AS5000-450	UN-TESTTABLE/012	
5	Fixtures and vices	A	Axle chuck, max. test force 62.5kgf	UN-AXLECHUCK	
		B	Small parts vice jaw width 55mm, open 50mm, self centering max. test force 62.5kgf	UN-VICE/115	
		C	Polished precision vice with lock down system ; jaw width 25mm, open's 20mm	UN-VICE/210	
		D	Polished precision vice lock down system ; jaw 36 mm, depth 42 mm	UN-VICE/215	
			Polished precision vice lock down system ; jaw 48 mm, depth 75 mm	UN-VICE/220	
			Polished precision vice lock down system ; jaw 75 mm, depth 100 mm	UN-VICE/230	
	E	Wire Testing Fixture, max. test force 62.5kgf	UN-WIRE/105		

6	Sample holders	A	Sample holder for 1 sample	UN-ESH1	
		B	Sample holder for 4 samples	UN-ESH4	
		C	Sample holder for 6 samples	UN-ESH6	
		D	Insert 25 mm, for sample holders	UN-ESHI25	
			Insert 30 mm, for sample holders	UN-ESHI30	
			Insert 40 mm, for sample holders	UN-ESHI40	
7	Sample holder		Universal clamp and levelling device	UN-CLAMP/105	
8	Vibration isolation stage		Passive vibration isolation stage, broad spectrum, designed for NEMESIS 9100	UN-AVS-300	
9	Projector		On request, any brand of your choice	UN-PROJECTOR	
10	Printer		Laser printer	UN-PRINT	
11	LCD screen		Portrait mode 15" capacitive touch screen	UN-SCREEN1	STANDARD
12	Keyboard and mouse		Logitech keyboard and mouse	UN-SKBSET	STANDARD
13	Bench stands		Cabinet test table with drawer 150x75x80cm	UN-STAND/965	
			Pre installation, calibration, handling and standard packing (for sea and airworthy transportation)	SEAPACK/060	
	3-Axis Joystick		3-axis joy stick, with fine adjustment and dynamic axis control	UN-JOYSTICK1	
	Bluetooth		Bluetooth connectivity	UN-BTADAPT	
	Machine cover		Anti Static machine cover	UN-TESTERCOVER04	

ACCESSORIES

OBJECTIVES



INDENTERS



STAGES



ANVILS



ORDER DETAILS

FIXTURES & VICES



EMBEDDED SAMPLE HOLDERS



UNIVERSAL SAMPLE HOLDER



VIBRATION ISOLATION STAGE



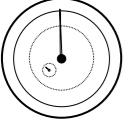
SOFTWARE

Manual on-screen measurement	UN-MANM	STANDARD
Automatic measurement	UN-AUTOM	STANDARD
Automatic focussing	UN-AUTOFOC	STANDARD
Report configurator	UN-REPORTA	STANDARD
User level management	UN-LEVMAN	STANDARD
Overview / Full view zoom camera + software functionality, field of view 35x50mm up to 200x180mm	UN-OVCAM2C	
CHD, SHD, NHD configurator & graphic interface. Requires: indent pattern configurator (TESTPAT01)	UN-PATCHD	
Video overlay graphic pattern editor	UN-TESTPAT01	
Weld inspection (ISO 9015)	UN-WELDPAT	
Ammunition testing pattern configurator & reporting	UN-SHELLCONF	
Hardness of screw thread decarbonized zone (ISO 898-1)	UN-ISO898/1	
Automatic edge detection	UN-EDGEDTC	
Automatic contour scanning	UN-CSCAN	
Drawing & measuring application	UN-DRMEAS	
Snapshot function	UN-SNAPSH	
Full stage view scanning	UN-STAGESC	
Kic crack measurement under load. Palmqvist & Median / Radial fracture toughness	UN-CRKPAP	
2D / 3D hardness chart (scanning/mapping, includes automatic contour scanning)	UN-CSCAN2D3D	
DualView Technology, 2 viewing screens software ; screen, cables, European and US power cables included	UN-DVTECHSET	
Virtual joystick, on-screen		STANDARD
Advanced 3-axis communication protocol for robotic systems	UN-REMC	
Q-DAS Certified connectivity protocol	UN-QDAS	

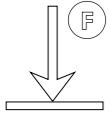


SPECIFICATIONS

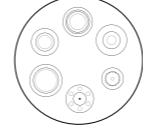
HARDNESS SCALES

	ROCKWELL EN-ISO 6508 ASTM E-18 JIS Z 2245	Regular Rockwell scales; Pre Load 10kgf, Main Load 60kgf, 100kgf, 150kgf A, B, C, D, E, F, G, H, K, L, M, P, R, S, V, Superficial Rockwell scales; Pre Load 3kgf, Main Load 15kgf, 30kgf, 45kgf 15N, 30N, 45N, 15T, 30T, 45T, 15W, 30W, 45W, 15X, 30X, 45X, 15Y, 30Y, 45Y
	VICKERS ISO 6507 ASTM E384, E92 JIS B 7725	HV0.010, HV0.015, HV0.020, HV0.025, HV0.050, HV0.1, HVO.2, HV0.3, HV0.5, HV1, HV2, HV2.5, HV3, HV4, HV5, HV10, HV20, HV25, HV30, HV40, HV50, HV100, HV120, HV150; All test forces are also available for the HVT scales
	Kic Fracture toughness	All Vickers forces & scales
	KNOOP ISO 4545 ASTM E92 JIS Z 2251	HK0.01, HK0.02, HK0.025, HK0.05, HK0.1, HK0.2, HK0.3, HK0.5, HK1, HK2, HK5
	BRINELL ISO 6506, ASTM E10 JIS Z 2243	HBW1/1kgf, HBW1/1.25kgf, HBW1/2.5kgf, HBW1/5kgf, HBW1/10kgf, HBW1/30kgf; HBW2.5/6.25kgf, HBW2.5/7.8125kgf, HBW2.5/15.625kgf, HBW2.5/31.25kgf, HBW2.5/62.5kgf, HBW2.5/187.5kgf; HBW5/25kgf, HBW5/31.5kgf, HBW5/62.5kgf, HBW5/125kgf, HB- W5/187.5kgf, HBW5/250kgf; HBW10/100kgf, HBW10/125kgf, HBW10/250kgf, HBW10/750k- gf, HBW10/1000kgf, HBW10/1500kgf, HBW10/3000kgf; All test forces are also available for the HBT scales
	HVD (HVT)	All Vickers test forces, as per above table.
	HBD (HBT)	All Brinell test forces, as per above table.
	PLASTIC ISO 2039	49 N, 132 N, 358 N, 961 N
	CARBON	HR 2,5/7, HR 5/7, HR 5/15, HR 5/20, HR 5/40, HR 5/60, HR 5/100, HR 5/150, HR 10/20, HR 10/40, HR 10/60, HR10/100, HR 10/150
	CONVERSIONS	Conversion to other hardness scales according to ASTM E140, ISO 18265, GB/T 1172

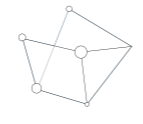
TEST FORCE

	Force application	Multi-load cell, closed loop, force feedback system
	Test forces	0.1kgf – 3000kgf
	Force range per model	NEMESIS 9101 100gf – 250kgf NEMESIS 9103 200gf - 3000kgf
	Test force tolerance	< 0.25% for test force 100gf to 250kgf < 0.5% for test force below 100gf
	Dwell time settings	Default 10 seconds, user defined. Up to 999 seconds


TURRET

	Motorized turret	Ultra-fast, 8 position turret, 3 indenter positions, 3 objective positions
	Objectives	Long working distance 0.7x, 2.5x, 5x, 10x, 20x, 40x, 60x, 100x
	Indenters	Certified indenters (ISO/ASTM) available at choice
	Camera 1 (objective)	18 Mpx, HD, 4K+, Machine vision system
	Camera 2 (overview)	Full HD, Full Color, Optical zoom system, variable FOV 50 x 37mm - 200 x 160mm

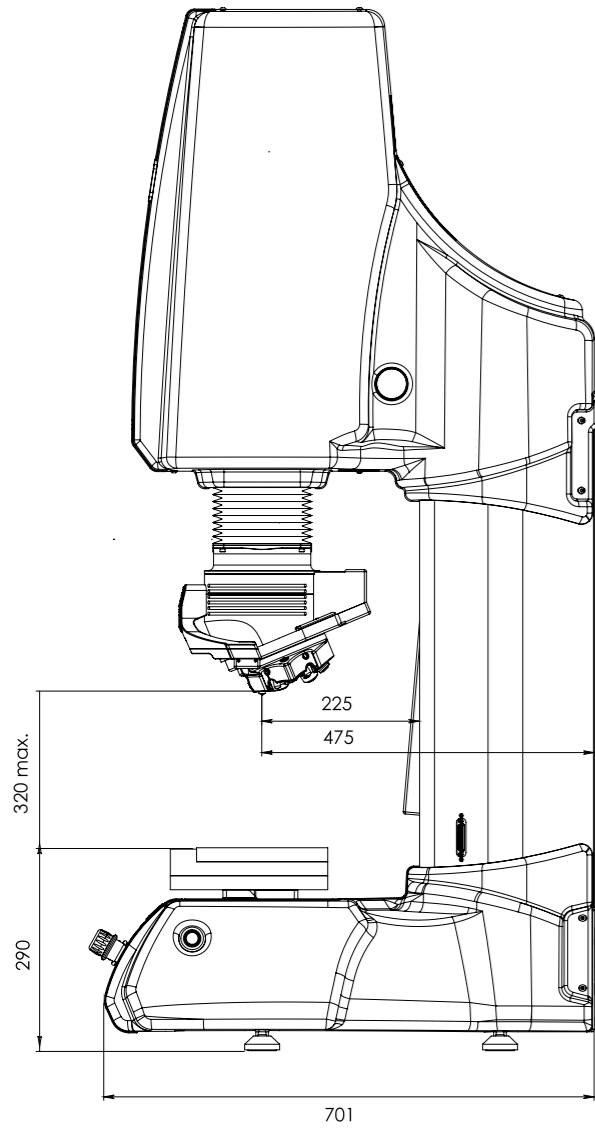
SYSTEM

	Electronic system	High performance embedded controller, i7, mSSD 120 GB, MS Windows® 10 operated
	CNC support	5 Axis CNC controller (for motorized stages) or stage accessories
	Screen(s)	15" portrait mode capacitive touch screen, second screen option
	Display resolution	0.01 HV, HK, HB
	Statistics	Total test, max, min, average, range, standard deviation, All in real time after each test
	Hardness conversion	Rockwell, Rockwell Superficial, Vickers, Brinell, Knoop, Leeb & Tensile
	Software	IMPRESSIONS™ V2, work flow system & tester control
	Data storage capacity	Internal and external mSSD, SSD or HDD
	Data output	XML, CSV, Certified for Q-DAS (Optional)
	Connectivity	5 USB ports, RJ45 Ethernet LAN, W-LAN, RS-232, Blue Tooth, 5 Axis CNC & motorized XY-stage connector, Dual HDMI screen connectors
Printer	A4, A3 full color laser printer (optional)	

GENERAL

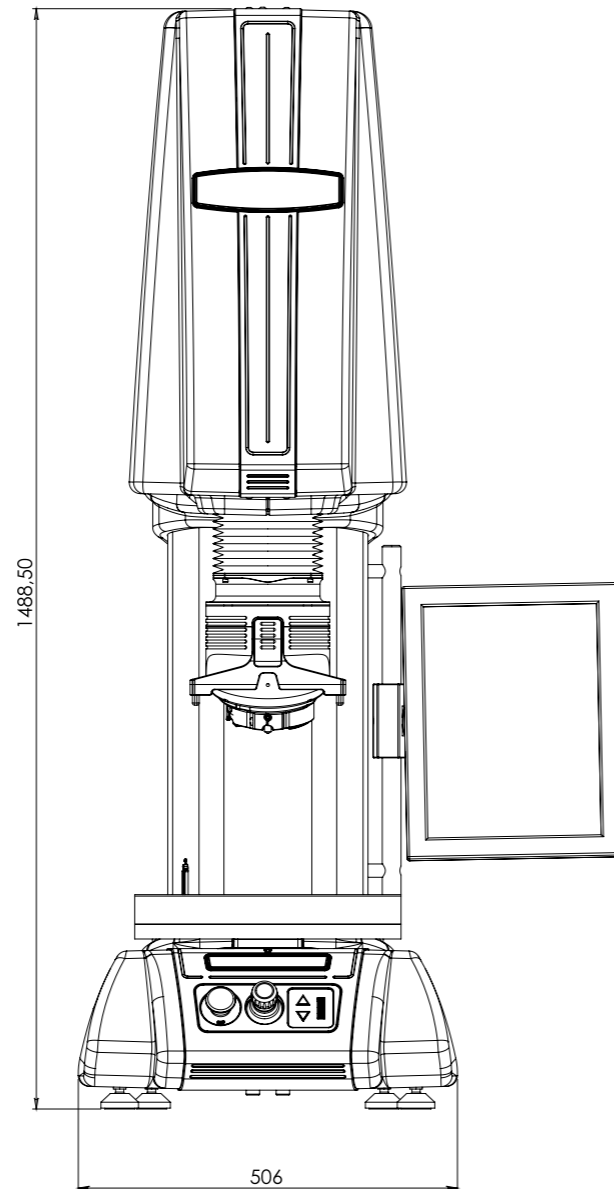
	Machine dimension	1100 mm x 425 mm x 695 mm
	Machine weight	280 kg
	Power supply	100VAC to 240VAC, 50/60Hz, single phase
	Operating temperature	10°C to 35°C, non-condensing
	Power consumption	100W
	Humidity	10% to 90%, non-condensing

TECHNICAL DRAWINGS



All dimensions in these drawings are in mm, approximate. Working heights and or workpiece accommodation varies depending on the stages and stage accessories used.

Please contact our sales department for more details.



OTHER MODELS IN THE UNIVERSAL RANGE



NEMESIS 5100

Multi Load Cell, Closed loop
Fully automatic, 8 position turret
Rockwell, Superficial Rockwell,
Micro/Macro Vickers, Knoop
& Brinell Hardness testers
Descending test head,
fixed work piece position
See brochure B18N5100/XX

Changes in products and/or product specifications can emerge due to new technologies and continuous development.

We reserve the right to change or modify specifications of the products without prior notice. We recommend you to contact our sales office for up-to-date information.

Brochure B18N9100/01/EN

© All rights reserved, 2018, v1.01

www.innovatest-europe.com

Distributor :

CORPORATE HEAD OFFICE

INNOVATEST Europe BV

Manufacturing, Distribution & Service

Borgharenweg 140
6222 AA MAASTRICHT
The Netherlands

Phone: +31 43 3520060

Fax: +31 43 3631168

info@innovatest-europe.com

www.innovatest-europe.com

INNOVATEST Shanghai Co., Ltd.

Sales & Service

Building 2, No.123,
1165 Nong Jindu Road
South Metropolis Industrial Park
Minghang District,
Shanghai, P.R. CHINA
Zip code 201108

Phone: +86 21 60906200

Fax: +86 21 60912595

info@innovatest-shanghai.com

www.innovatest-shanghai.com

INNOVATEST Japan Co., Ltd.

Sales & Service

3-36-13, Horinouchi,
Suginami-ku, Tokyo,
JAPAN 166-0013

Phone: +81 4 2937 7540

Fax: +81 4 2937 7542

info@innovatest-japan.com

www.innovatest-japan.com

INNOVATEST South East Asia

Sales & Service

20 Sin Ming Lane #05-58
Midview City
SINGAPORE 573 968

Phone: +65 6451 1123

Fax: +65 6452 1011

info@innovatest-singapore.com

www.innovatest-singapore.com

INNOVATEST Polska sp. z.o.o

Sales & Service

Ul. Komornicka 127
62-051 Wiry
POLAND

Phone: +48 697 099 826

info@innovatest-polska.pl

www.innovatest-poland.com